

A brown, weathered wooden sign with a yellow border and a dark blue outline. The text "Camp Greilick Sketch Plan Review" is written in a white, cursive font. There are two yellow starburst graphics on the sign, one on the left and one on the right.

Camp Greilick Sketch Plan Review



Guiding Principles



Proposed Uses



Maps



Current Partners



Park Rules



Management Practices



Transparency

Guiding Principles/Documents

- Stay true to core vision: “Protect and preserve the conservation value of the property and dedicate it as a public space where County residents and visitors can experience passive and active outdoor recreation, learn to be better stewards of the environment, and develop skills to improve their outdoor experience.”
- Park Master Plan approved by GTC Parks Commission and accepted by Board of County Commissioners (April 2025)
- Conservation Easement- already in place, possibility to further strengthen
- Partnership, partnership, partnership
- Be good stewards- of the land, of the property’s history, and of taxpayer dollars

All Phases of Camp Greilick

- 1: Trail access, disc golf course access, shelter (pavilion) rental, swimming beach access, fishing, equipment rental
- 2: Cabin usage/rental, semi-rustic cabin usage/rental, educational programming, camp programming, Besser Lodge rental
- 3: Amphitheater rental, chapel rental, supervised teams course access, supervised climbing/zip line tower access, hunting
- 4: Supervised archery, rifle, and shotgun range access on a permit only basis
- 5: Rustic camping

Proposed Uses-Current Review

- **1: Trail access, disc golf course access, shelter (pavilion) rental, swimming beach access, fishing, equipment rental**
- **2: Cabin usage/rental, semi-rustic cabin usage/rental, educational programming, camp programming, Besser Lodge Rental**
- **3: Amphitheater rental, chapel rental,** supervised teams course access, supervised climbing/zip line tower access, hunting
- 4: Supervised archery, rifle, and shotgun range access on a permit only basis
- 5: Rustic camping

Proposed Uses-Current Review

- Specific uses prioritization based on: ability to engage volunteers to get work done, lower complexity/lower impact uses, focus on what can we make available sooner rather than later (more “pocket” amenities that showcase easter eggs already existing on property)
- Also based on capacity and funding limitations as well as intent to move slowly and thoughtfully through development
- Part of this process is revegetating/returning to nature some social trails and obsolete spaces

Recreation Upgrades

- Trail access (hiking, biking, BMX track)
 - Exists on site, needs improvement
- Disc golf
 - Exists on site, needs improvement and management plan for GTRLC
- Pavilion, amphitheater, and chapel rental
 - Exists on site, varying work needed
- Swimming beach
 - Exists on site, needs improvement
- Fishing area
 - Exists on site, needs improvement
- “Pocket” amenities of foosball, bouldering wall, nature playscape, story walk
 - Partially exists on site, needs development or improvement

Programming

- Educational programming
 - Utilizing existing infrastructure
- Day Camp programming
 - Utilizing existing infrastructure
- On-site organized recreation such as disc golf tournaments (1-2 annually, maximum 72 participants), supervised youth gatherings
 - Utilizing existing infrastructure

Infrastructure Upgrades

- Full service cabin usage/rental primarily to be used as housing for workgroups/volunteers, day camps, housing for day camp staff
 - Exists on site, needs improvement
- Semi-rustic cabin rental
 - Exists on site, needs improvement
- Besser Lodge rental
 - Exists on site, needs improvement

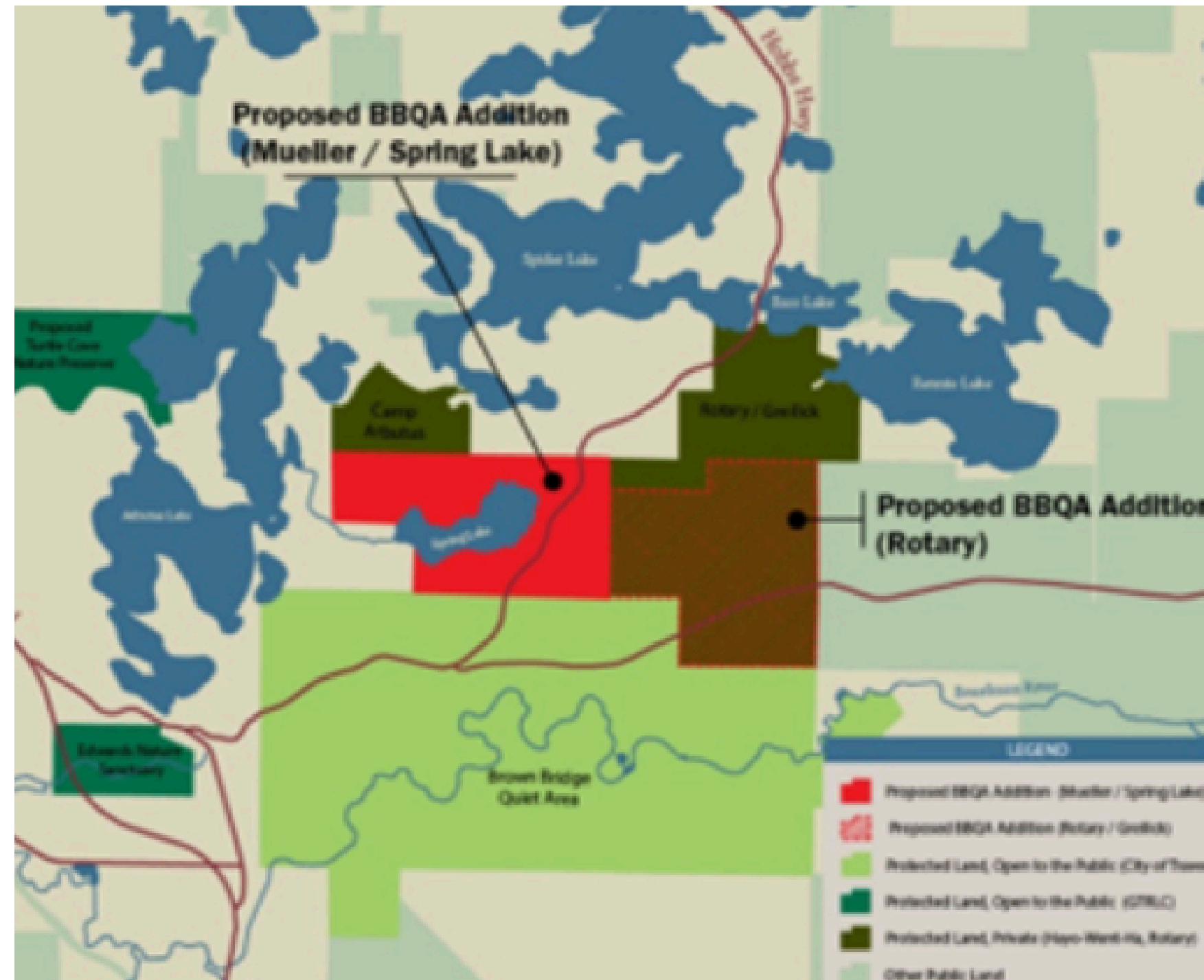
How will the work get done?

- Heavily relying on volunteers and internal staff
- Smaller more manageable chunks of work
- Engage professionals and subcontractors for sensitive/technically challenging work

Additional Use Details

- Tree removals limited to GT Metro Fire life safety needs, hazard/severely diseased trees, small saplings less than 1" DBH. All tree removals are reviewed with the Grand Traverse Regional Land Conservancy
- Proposed management plan will include operating hours/time parameters for rentals, size of maximum events, restroom requirements by attendance numbers, and cost recovery model
- No events that would necessitate pulling a special use permit- all on site contained and limited by parking (approximately 100 spaces in lot)
- No vehicles allowed into park interior other than for accessible parking with permit and vendor drop-off/pick-up
- Safety additions to secure shotgun range/other areas as needed
- No lighting changes
- Emergency access signed and maintained per GT Metro Fire- will be gated and locked when not needed

Sketch of Proposed Uses- General Area Overview



Property Boundaries



Trails and Disc Golf Course

Trails Legend

Biking

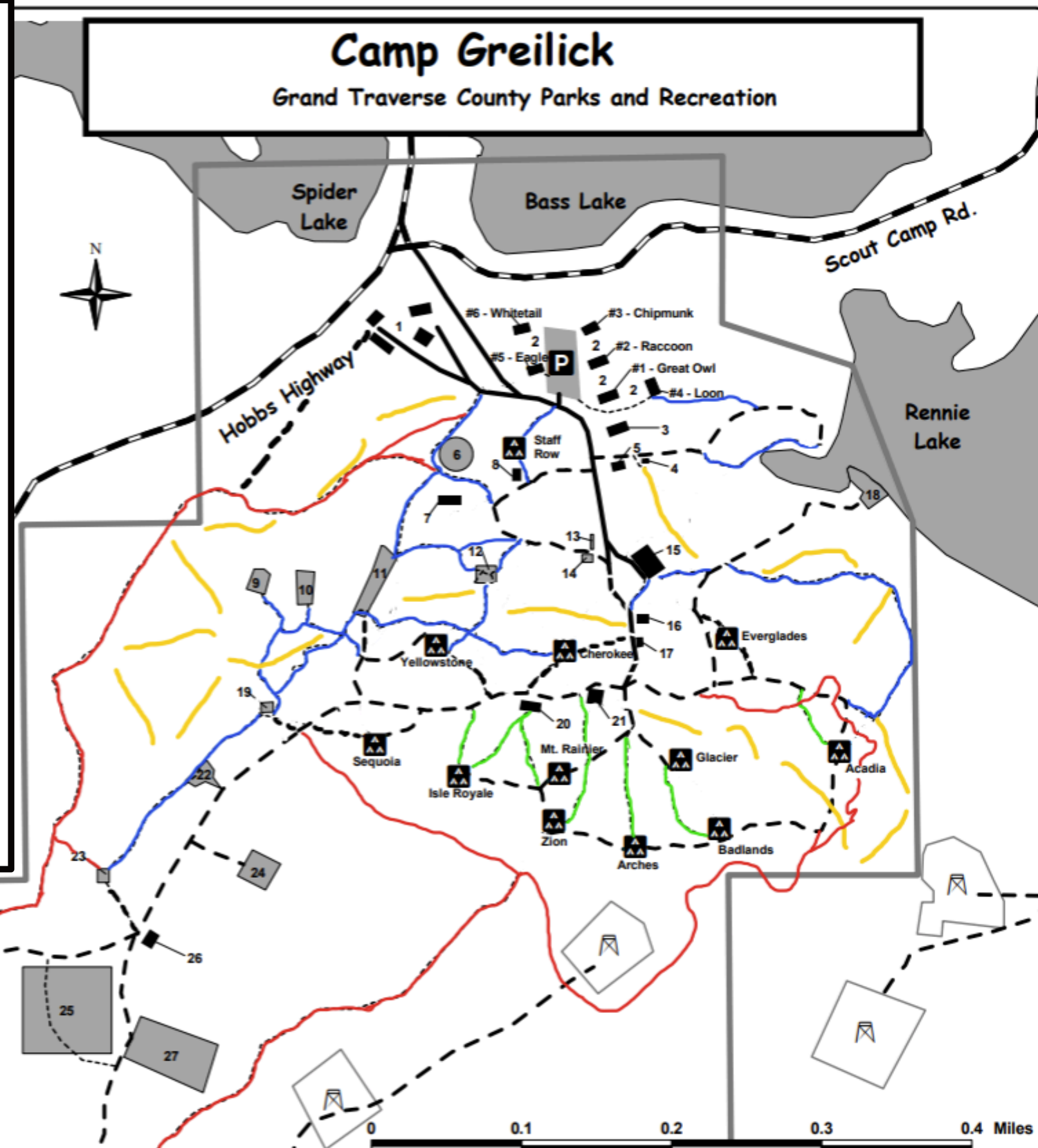
Disc Golf

Hiking

Connectors

-- Two
track/sand

– Paved road



Highlighted Features



Current Partners

- Aloft Disc Golf
- Grand Traverse Conservation District
- Grand Traverse Regional Land Conservancy
- North Country Trails Association
- TART
- Northern Michigan Mountain Bike Association
- Camp Greilick Alumni Group
- Input from neighbors



Overarching/Existing Park Rules- Key Points

- No outside watercraft permitted to launch from county property into Spider, Bass, or Rennie Lakes
- Current park rules on noise mirror East Bay Township's noise ordinance
- Many activities are already by permit only (camping, hunting)- this rule automatically disallows those activities until such time as we seek and receive approval from the township and have developed management practices

Proposed Management Practices

- Fee structure to be tied to impact of event
 - Alcohol
 - Times of use
 - Event sizes and capacity
 - User group type (education, conference, family parties, etc.)
 - Incentivizing the programs with the most mission fit
- Disc golf has a standalone management plan to be filed with Land Conservancy
- Park hours
- Overnight stays
- Risk management approach

Transparency- Park Master Plan and Real-Time Weekly Updates

