

ELECTIONS IN GRAND TRAVERSE COUNTY

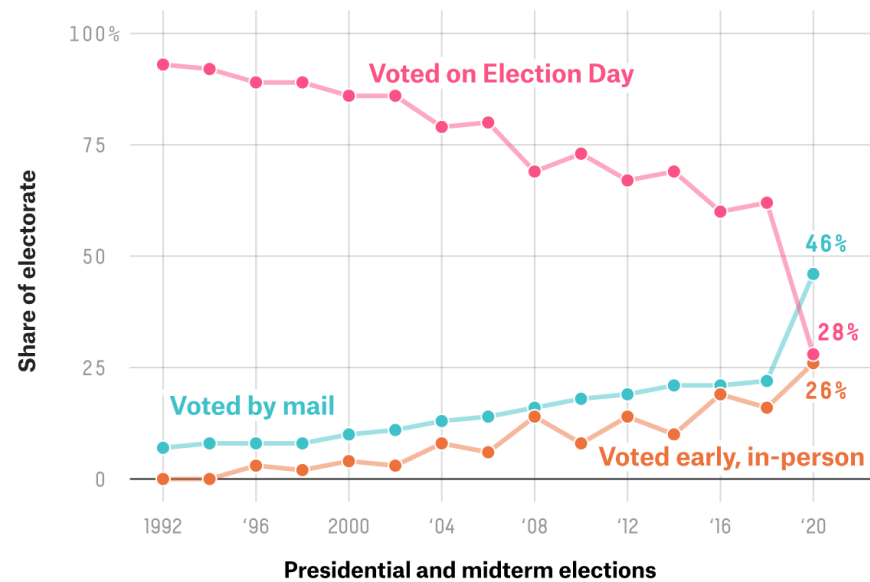
Proposal 2-22 Early Voting

- Recognize fundamental right to vote without harassing conduct;
- Require military or overseas ballots be counted if postmarked by election day;
- Provide voter right to verify identity with photo ID or signed statement;
- Provide voter right to single application to vote absentee in all elections;
- Require state-funded absentee-ballot drop boxes, and postage for absentee applications and ballots;
- Provide that only election officials may conduct post-election audits;
- Require nine days of early in-person voting;
- Allow donations to fund elections, which must be disclosed;
- Require canvass boards certify election results based only on the official records of votes cast.

Changing Behavior and Polarization

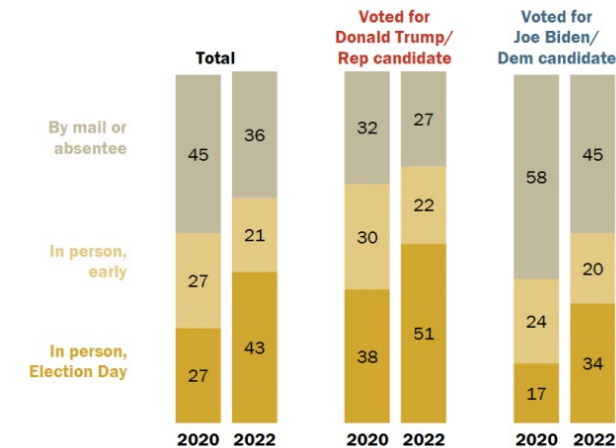
Election Day voting drops while mail voting soars

Share of votes cast by voting method for every presidential and midterm election since 1992



Smaller shares voted by absentee or mail-in ballot in 2022 than in 2020

% of validated voters who cast their ballot ...



Notes: Based on 9,668 (2020) and 7,461 (2022) adult citizens for whom reliable data on turnout and vote choice are available. Turnout was verified using official state election records. Vote choice for all years is from a post-election survey with additional data from panelist profile surveys. Data for 2020 has been revised since 2021 report. Refer to the Methodology for more detail.

Source: Surveys of U.S. adults conducted Nov. 12-17, 2020, and Nov. 16-27, 2022, plus data from panelist profile surveys.

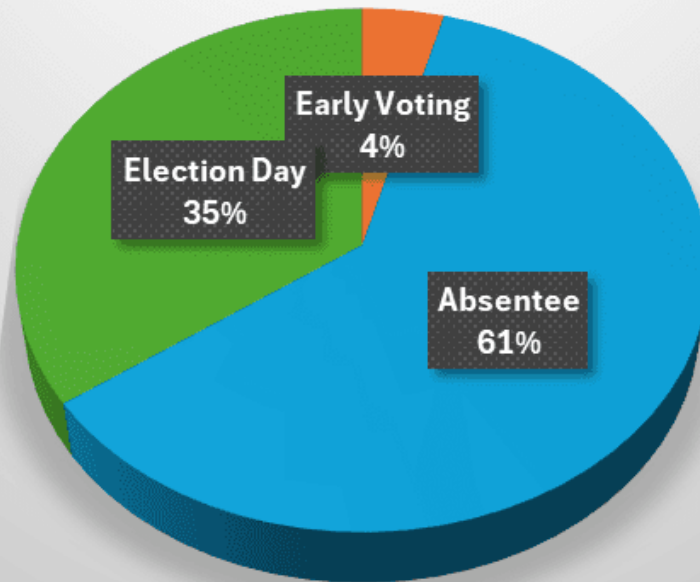
Key Differences Between Early Voting and Election Day

- Voting is suspended each day of Early Voting at closing
- Results are NOT tabulated
- Voter check in is connected to the state QVF in real time
- Computers are connected to the state server
- Multiple Ballot styles representing multiple jurisdictions and precincts are present in an Early Voting Site
- Hours set by clerk (minimums set by the state)
- Can return and tabulate a voters absentee ballot
- Daily Reconciliation Summary at the suspension of the polls
- Daily Ballot Status Accounting Report on the Tabulator



2024 Presidential Primary

Voting Choice Presidential Primary



ABSENTEE VOTING

- 14,013 ABSENTEE VOTES
- 61% OF ALL VOTERS COUNTYWIDE
- 49.7% OF TRUMP VOTES WERE ABSENTEE
- 61.9% OF HALEY VOTES WERE ABSENTEE
- 77.6% OF BIDEN VOTES WERE ABSENTEE

EARLY VOTING

- 962 EARLY VOTES CAST
- 4% OF ALL VOTES COUNTYWIDE
- 5% OF TRUMP VOTES WERE IN PERSON EARLY VOTING
- 5% OF HALEY VOTES WERE IN PERSON EARLY VOTING
- 3.3% OF BIDEN VOTES WERE IN PERSON EARLY VOTING

February Presidential Primary

Grand Traverse County Daily Early Voting Totals									
	2/17/2024	2/18/2024	2/19/2024	2/20/2024	2/21/2024	2/22/2024	2/23/2024	2/24/2024	2/25/2024
	Saturday	Sunday	Monday	Tuesday	Wednesday	Thursday	Friday	Saturday	Sunday
East Regional	10	13	27	25	23	36	26	35	25
West Regional	13	13	19	23	20	25	28	25	9
South Regional	6	9	5	13	16	7	16	15	7
Garfield	15	11	31	43	29	33	28	36	24
Traverse City	11	4	14	24	14	11	17	14	18
Blair	7	3	12	19	9	9	10	14	13
TOTAL	62	53	108	147	111	121	125	139	96

962 Votes

- \$540 per day in labor per site on average for Election Inspectors= **\$29,160**
- New Equipment (Tabulators & Voter Assistance Terminals) for Early Voting = **\$76,360**
- Staff Overtime, incidental supplies, security equipment, computers = approx. **\$20,000**

Conservatively estimated at \$130.47 per voter

Absentee Voting

- Vastly higher volume than early voting
- Fewer staffing resources to assist clerks and staff
- 45-day window
- Drop Box to maintain
- Voter follow ups for undeliverable ballots
- Permanent voter list instead of a permanent application list



Challenges

- Grant Funding is limited to one election but mandates are ongoing and baseline costs are extensive
- Staying informed of legal changes and properly conveying them to stakeholders
- Distrust of Technology and Misunderstanding of Processes
- Election worker retention and recruitment; site usage
- Physical and Cyber security
- Intragovernmental cooperation & training

