

# American Rescue Plan Act Survey Results

Grand Traverse County  
May 27, 2022



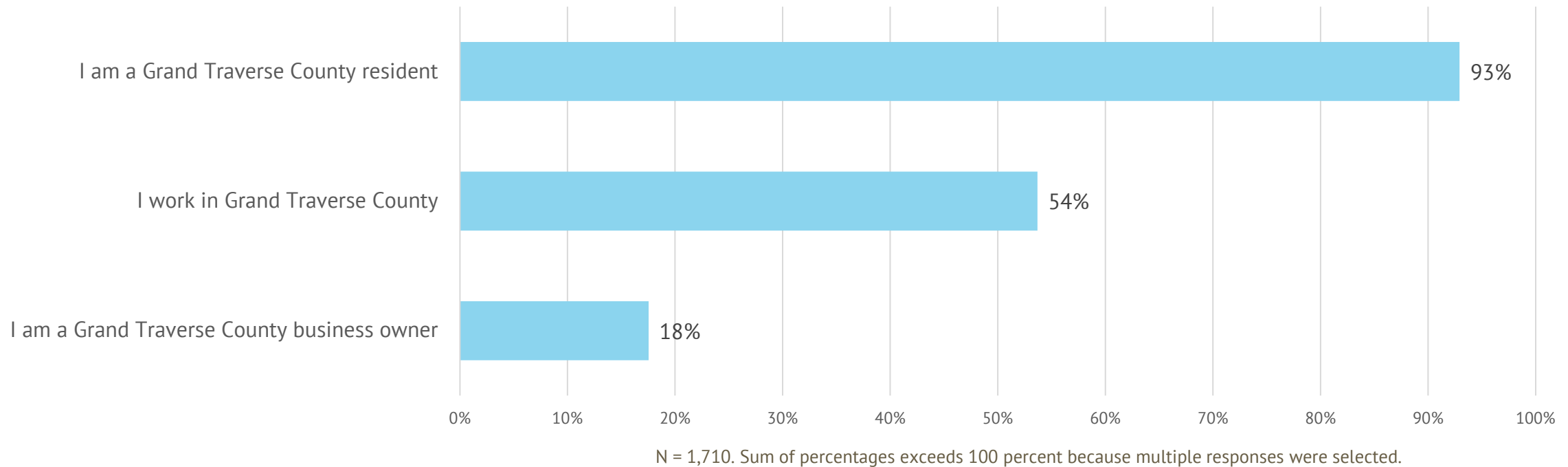
[PUBLICSECTORCONSULTANTS.COM](https://PUBLICSECTORCONSULTANTS.COM)

# Survey Background

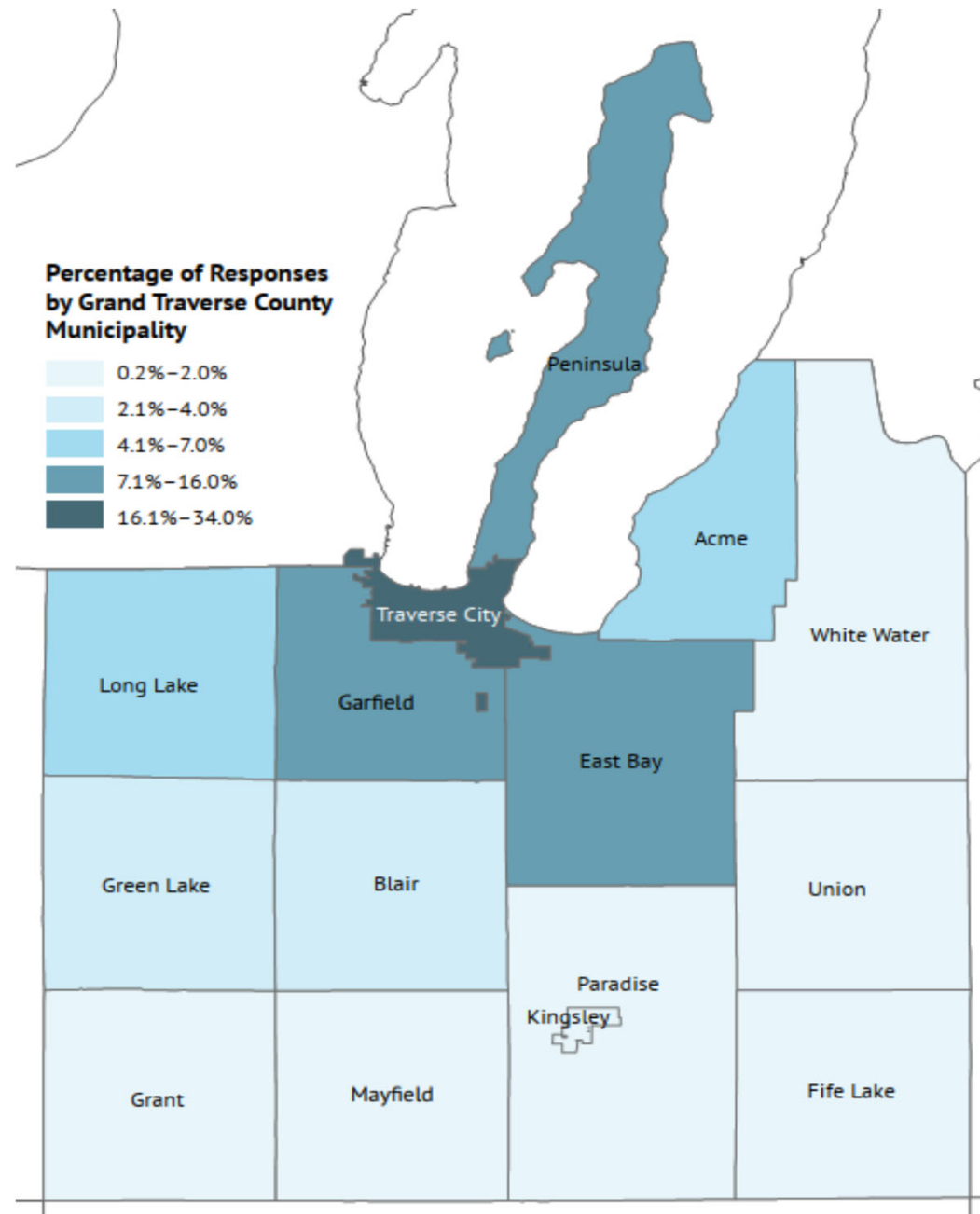
- Survey was developed to garner feedback from county residents on priorities for the American Rescue Plan Act (ARPA)
- Survey went live on April 12 and closed on May 13
- 1,841 total respondents representing all 13 townships, 2 villages, and Traverse City
  - 1,818 digital responses
  - 23 paper responses

# Respondents

# Residency and Place of Work



Ninety-three percent of survey respondents are residents of Grand Traverse County, while 54 percent work in the county and 18 percent are business owners

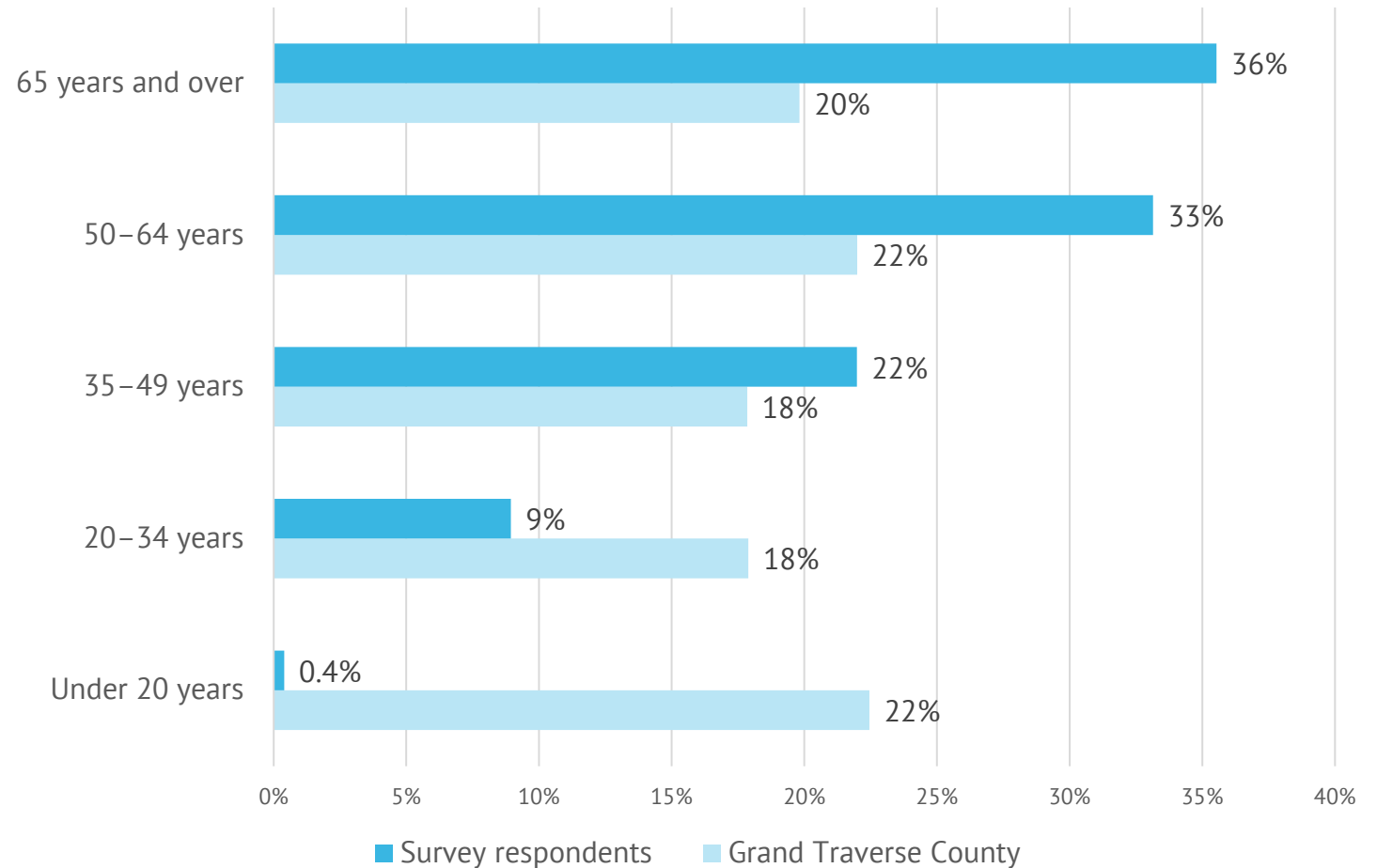


Percentage of Respondents	
Acme Township	6%
Blair Township	3%
East Bay Township	13%
Fife Lake Township	1%
Fife Lake Village	<1%
Garfield Charter Township	16%
Grant Township	1%
Green Lake Township	4%
Kingsley Village	1%
Long Lake Township	7%
Mayfield Township	1%
Paradise Township	2%
Peninsula Township	11%
Traverse City	34%
Union Township	<1%
Whitewater Township	1%

N = 1,681. Percentages may not total to 100 due to rounding.

# Age

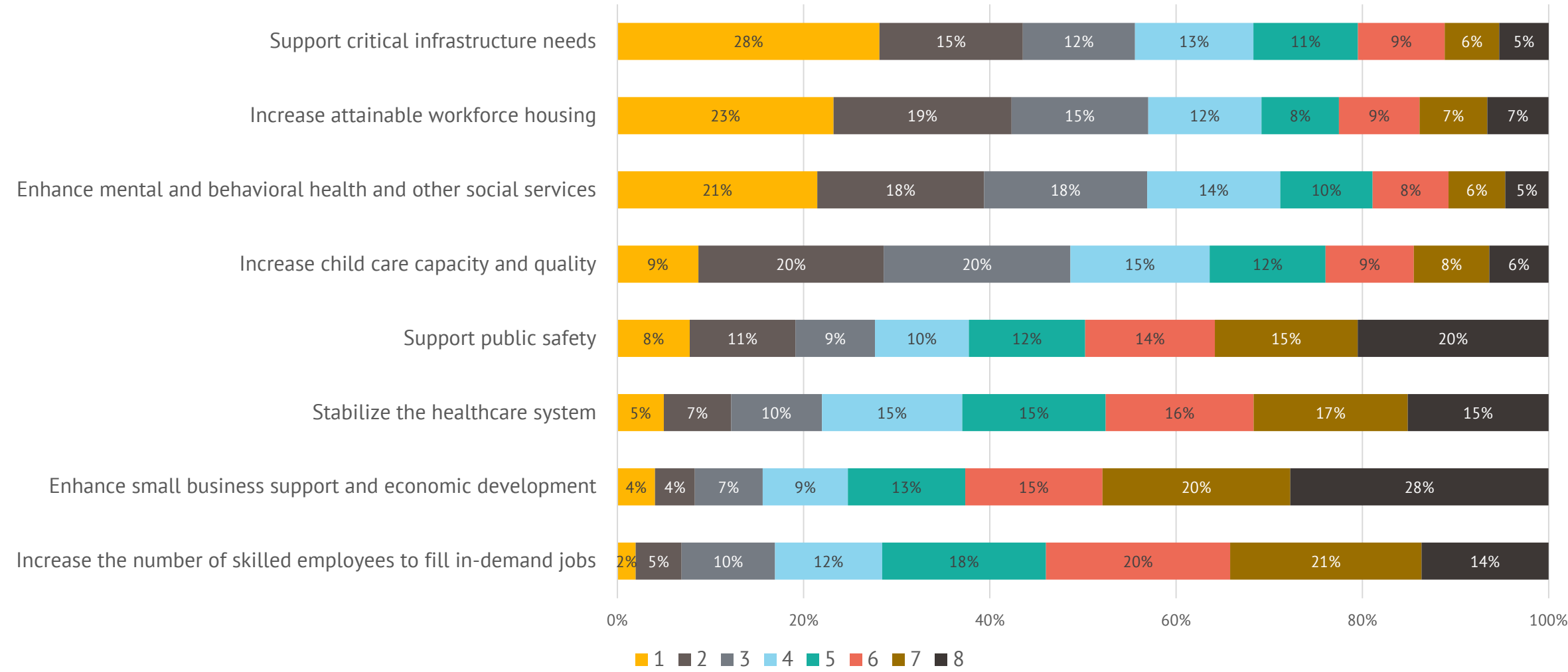
- More than half of survey respondents (69 percent) are 50 years or older
- One-third are between 20 and 49 years old
- Less than 1 percent are under 20 years old



N = 1,756. Percentages may not total to 100 due to rounding.  
Source: American Community Survey 2020 5-year estimates

# Priorities

# Ranked Priorities: All Respondents

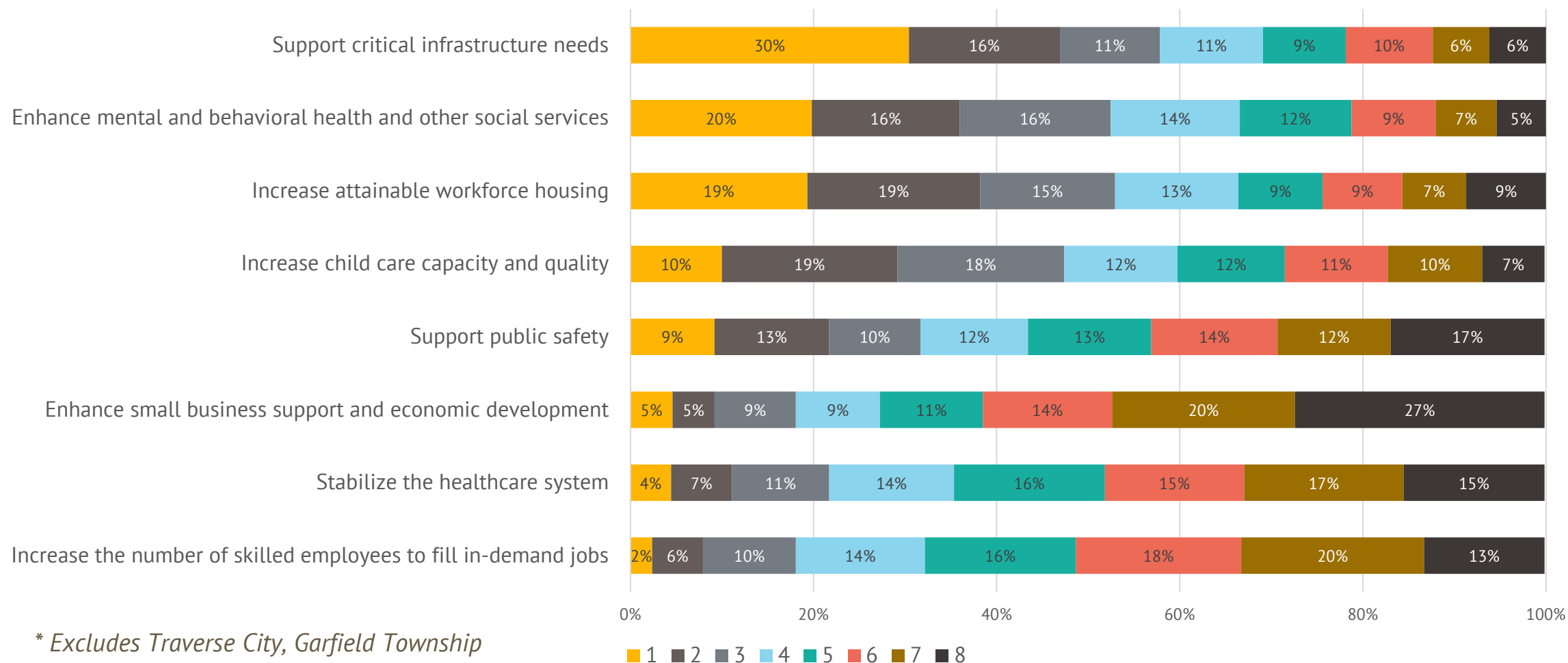


N = 1,826. Percentages may not total to 100 due to rounding.





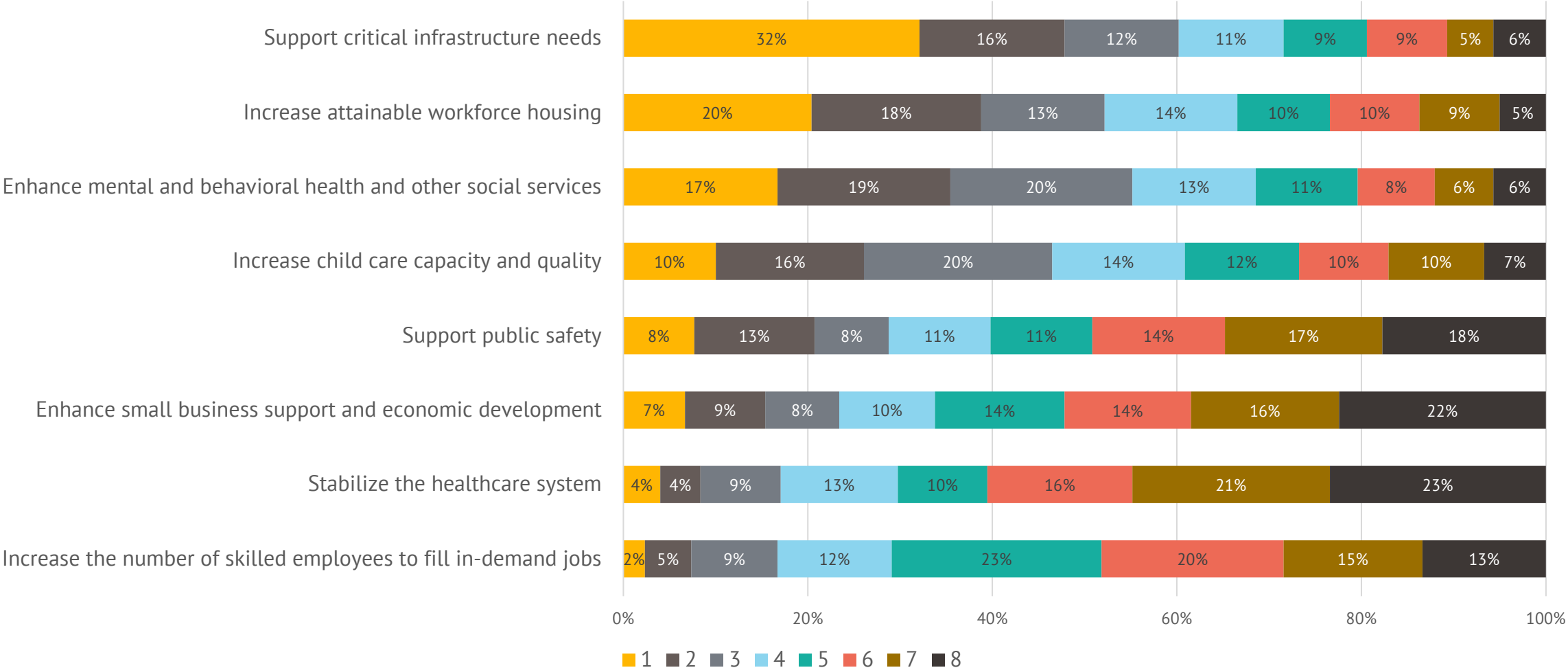
# Ranked Priorities: Out County\*



N = 631. Percentages may not total to 100 due to rounding.



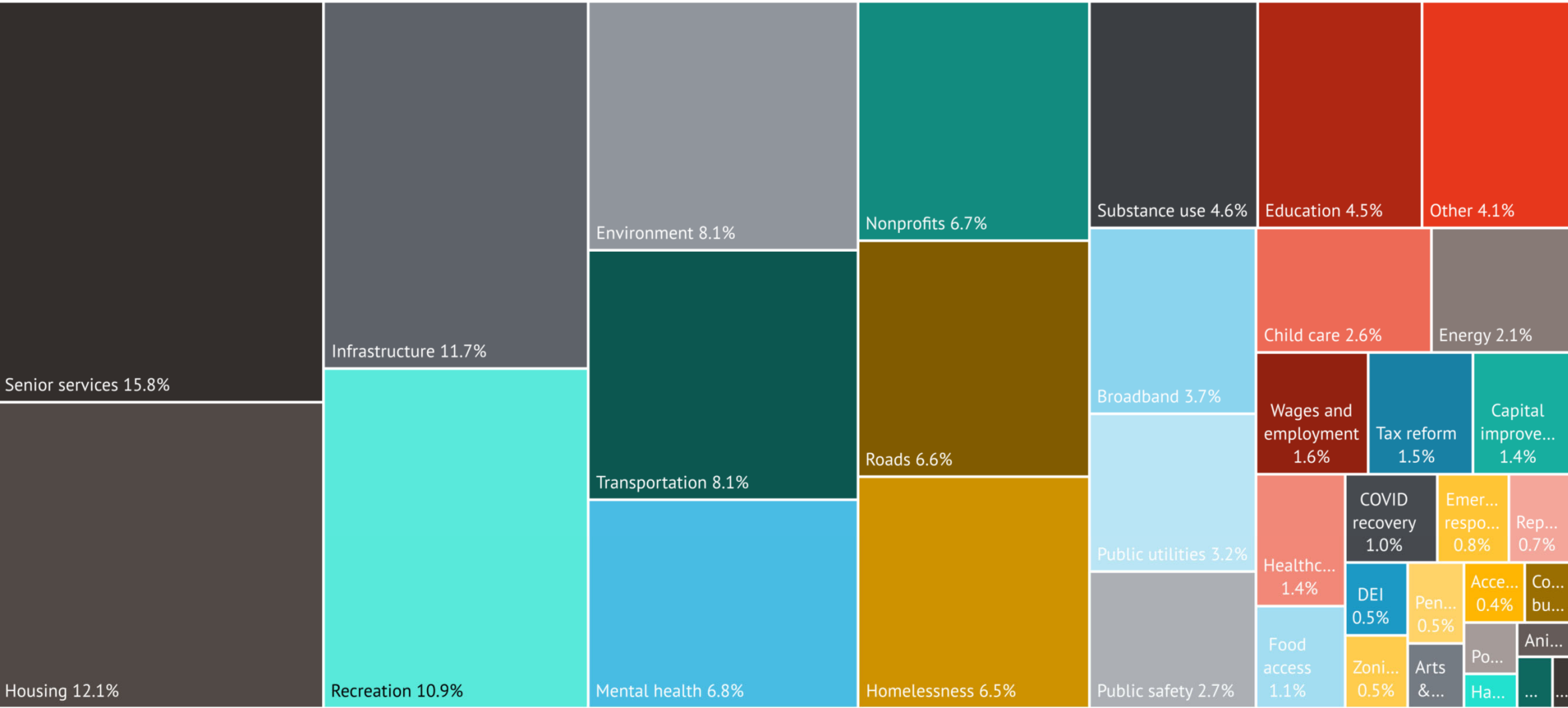
# Ranked Priorities: Business Owners



N = 299. Percentages may not total to 100 due to rounding.



# Are there any community priorities you think should receive ARPA funding?



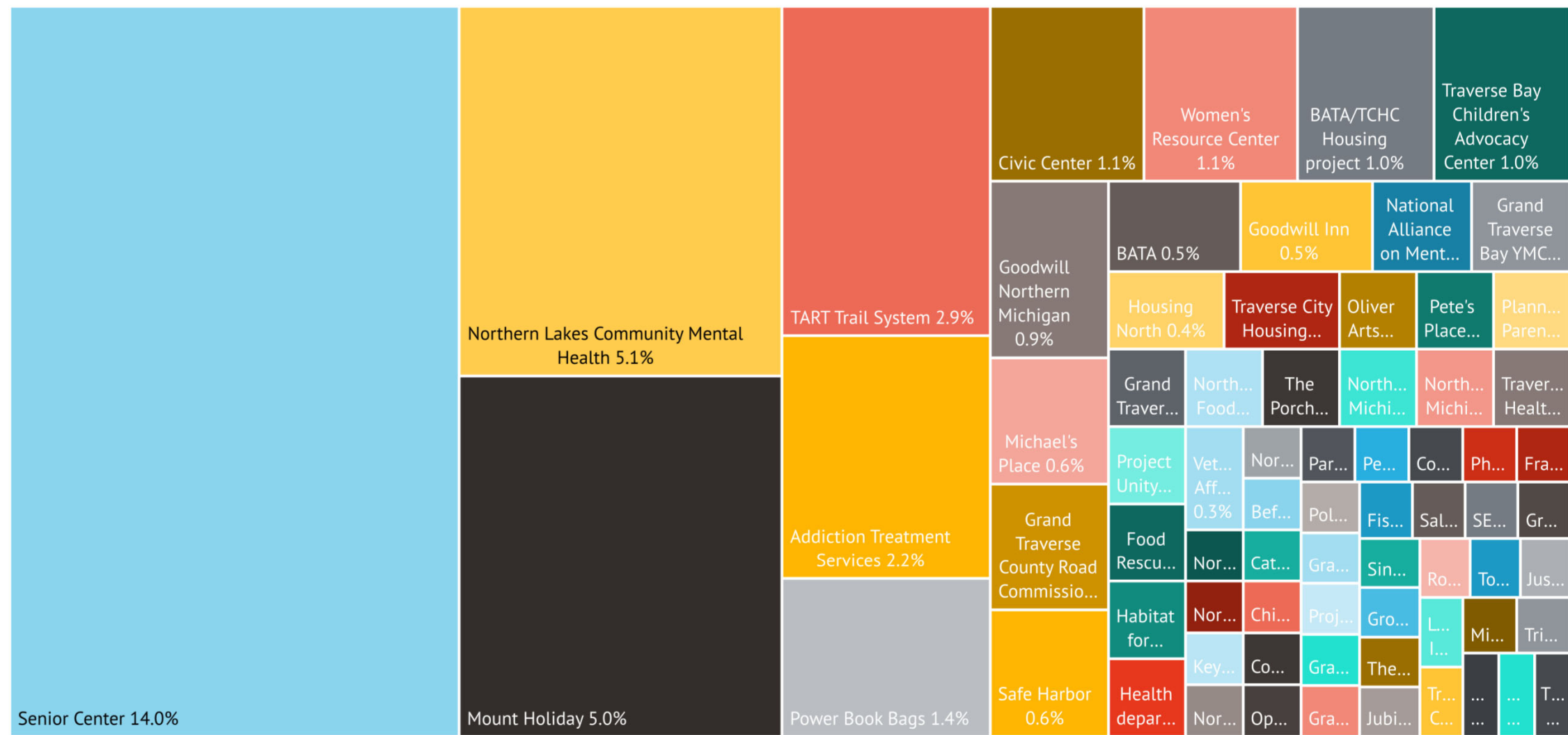
N = 911. Percentages may exceed 100 percent because more than one priority was shared.



Category	Percentage
Affordable housing	10.1%
Mental health services	9.1%
Infrastructure projects	8.7%
Road maintenance	7.4%
Child care	3.7%
Parks	2.8%
Trails	2.6%
Homelessness	2.3%
Homeless shelters	2.2%
Education programs	2.0%
Public safety	1.8%
Transportation	1.0%
Workforce housing	1.1%
Clean water infrastructure	1.0%
Substance use treatment	1.9%
Child and family services	1.4%
Broadband	1.7%
Nonprofits	1.4%
Outdoor recreation	0.8%
Clean energy projects	0.8%
Senior services	0.8%
Emergency response	0.8%
Healthcare	0.5%
Conservation	0.5%
Forest management	0.5%
Workforce development	0.6%
Food assistance program	0.6%
Youth programs	0.6%
Taxpayers relief	0.6%
Parkland	0.4%
Community center	0.4%
Climate change	0.4%
Capital improvement	0.4%
Public health	0.4%
Director's office	0.4%
Residential services	0.4%
Administration	0.4%
Finance	0.4%
Information technology	0.4%
Legal	0.4%
Planning	0.4%
Public works	0.4%
Recreation	0.4%
Revenue	0.4%
Security	0.4%
Small business	0.4%
Special services	0.4%
Union	0.4%
Unemployment	0.4%
Welfare	0.4%

# Are there any specific projects or programs you think should receive ARPA funding?

(Specific entities and programs mentioned)



N = 784. Percentages may exceed 100 percent because more than one priority was shared.



**PUBLIC SECTOR  
CONSULTANTS**

---

[PUBLICSECTORCONSULTANTS.COM](http://PUBLICSECTORCONSULTANTS.COM)

