



BONNIE SCHEELE
400 BOARDMAN AVENUE, SUITE 101
TRAVERSE CITY, MI 49684-2577
231.922.4760

TO: Apportionment Commission

FROM: Bonnie Scheele, County Clerk

SUBJECT: County Clerk T-1

The County Clerk's submission for proposed County Commissioner Districts was created in the CCD Redistricting Tool provided by the State of Michigan. The plan complies with MCL 46.404, each district falls within the population tolerance, districts are contiguous, and the variance between the smallest and largest districts is 11.9%.

When creating the map, we did not want to split any voting precincts, but when East Bay Charter Township drew new precinct lines they cut through census blocks in an unpopulated, orphaned, track of land located in the national forest in order to draw the precinct boundary line on a road. We are unable to split census blocks so our reapportionment map puts this orphaned track of land in a different district than the rest of that precinct. Since there is no population in these census blocks, it should not be an issue.

A map of the proposed districts is attached and can be viewed in the CCD Redistricting Tool. Below is the written narrative describing each district:

- District 1 - Peninsula 1 & 2, and Traverse City 8 & 9 (population 11,040)
- District 2 - Garfield 5 and Traverse City 1,3 and 10 (population 10,896)
- District 3 - Garfield 2, 4, and 7 and Traverse City 7 (population 10,647)
- District 4 - Blair 1, Green Lake 1, Long Lake 1 & 2 (population 10,692)
- District 5 - Grant, Mayfield, Green Lake 2 and Long Lake 3 (population 10,924)
- District 6 - Blair 3, Garfield 1, 3 & 6 (population 10,360)
- District 7 - Blair 2 & 4 and Paradise 1&2 (population 9,950)
- District 8 - East Bay 1, 2 & 5 and Acme 1 and **unpopulated track of land from East Bay 4** (population 10,239)
- District 9 - East Bay 3 & 4, Acme 2, Fife Lake, Union and Whitewater (population 10,490)

*All Plans use the precinct boundaries approved in September 2021 by Garfield and East Bay Township respectively.

Range of Deviation 10.3%

Grand Traverse County Reapportionment Plan 2021

Section 1 – District Descriptions

District 1

Peninsula Township

City of Traverse City (part) / VTD(s): Traverse City 8, Traverse City 9

District 2

Garfield Charter Township (part) / VTD(s): Garfield Twp NEW 5

City of Traverse City (part) / VTD(s): Traverse City 1, Traverse City 3, Traverse City 10

District 3

Garfield Charter Township (part) / VTD(s): Garfield Twp 2 NEW, Garfield Twp 4 NEW, Garfield Twp 7 NEW

City of Traverse City (part) / VTD(s): Traverse City 7

District 4

Blair Township (part) / VTD(s): Blair Twp 1

Green Lake Township (part) / VTD(s): Green Lake Twp 1

Long Lake Township (part) / VTD(s): Long Lake Twp 1, Long Lake Twp 2

District 5

Grant Township

Green Lake Township (part) / VTD(s): Green Lake Twp 2

Long Lake Township (part) / VTD(s): Long Lake Twp 3

Mayfield Township

Grand Traverse County Reapportionment Plan 2021

District 6

Blair Township (part) / VTD(s): Blair Twp 3

Garfield Charter Township (part) / VTD(s): Garfield Twp 1 NEW, Garfield Twp 3 NEW, Garfield Twp 6 NEW

District 7

Blair Township (part) / VTD(s): Blair Twp 2 and, Blair Twp 4

Paradise Township

District 8

Acme Township (part) / VTD(s): Acme Twp 1

East Bay Township (part) / VTD(s): East Bay Twp 1 NEW, East Bay Twp 4 NEW, East Bay Twp 5 NEW

District 9

Acme Township (part) / VTD(s): Acme Twp 2

East Bay Township (part) / VTD(s): East Bay Twp 2 NEW, East Bay Twp 3 NEW Fife Lake Township

Union Township

Whitewater Township

Section 2 – Data and Demographics

Population

District Name	Total Population	Target Population	Variance	Variance %	Compactness Polsby Popper	Compactness Schwartzberg
District 1	11,040	10,582	458	4.328	0.182	0.427

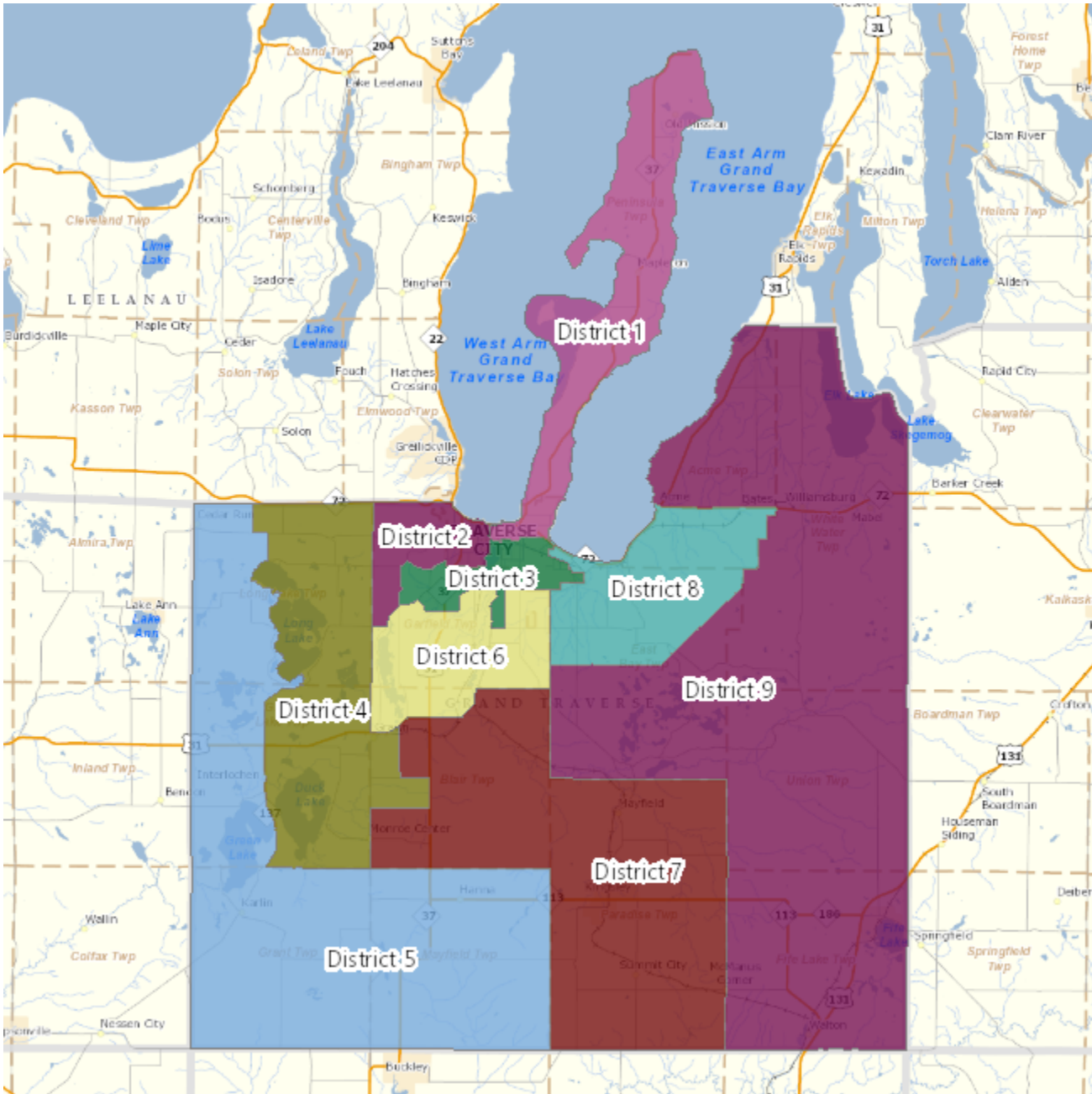
Grand Traverse County Reapportionment Plan 2021

District 2	10,896	10,582	314	2.967	0.405	0.636
District 3	10,647	10,582	65	0.614	0.213	0.461
District 4	10,692	10,582	110	1.040	0.346	0.588
District 5	10,924	10,582	342	3.232	0.313	0.560
District 6	10,360	10,582	-222	-2.098	0.452	0.672
District 7	9,950	10,582	-632	-5.972	0.405	0.637
District 8	10,239	10,582	-343	-3.241	0.397	0.630
District 9	10,490	10,582	-92	-0.869	0.377	0.614

Grand Traverse County Reapportionment Plan 2021

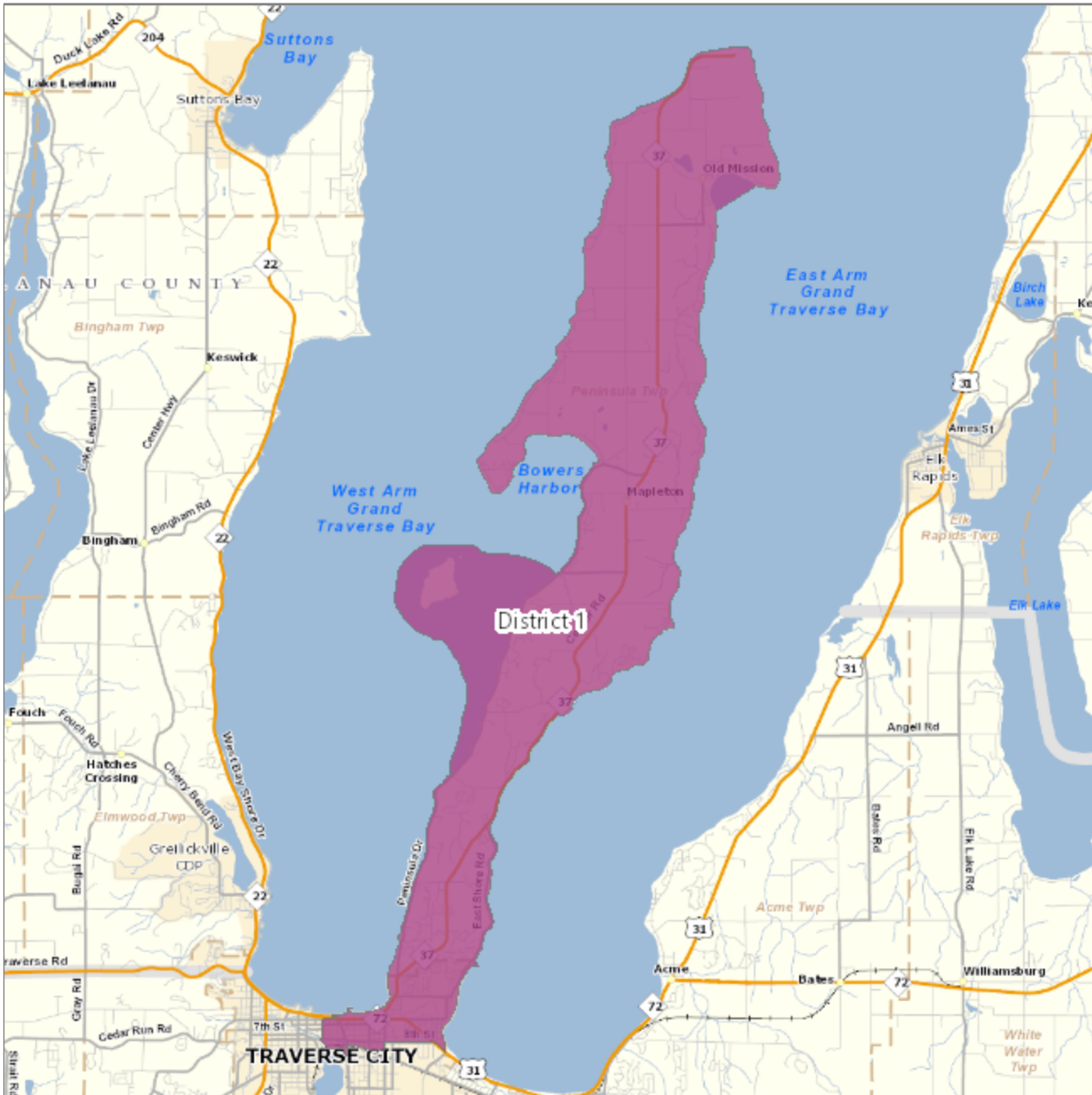
Section 3 – Maps

Grand Traverse County District Map



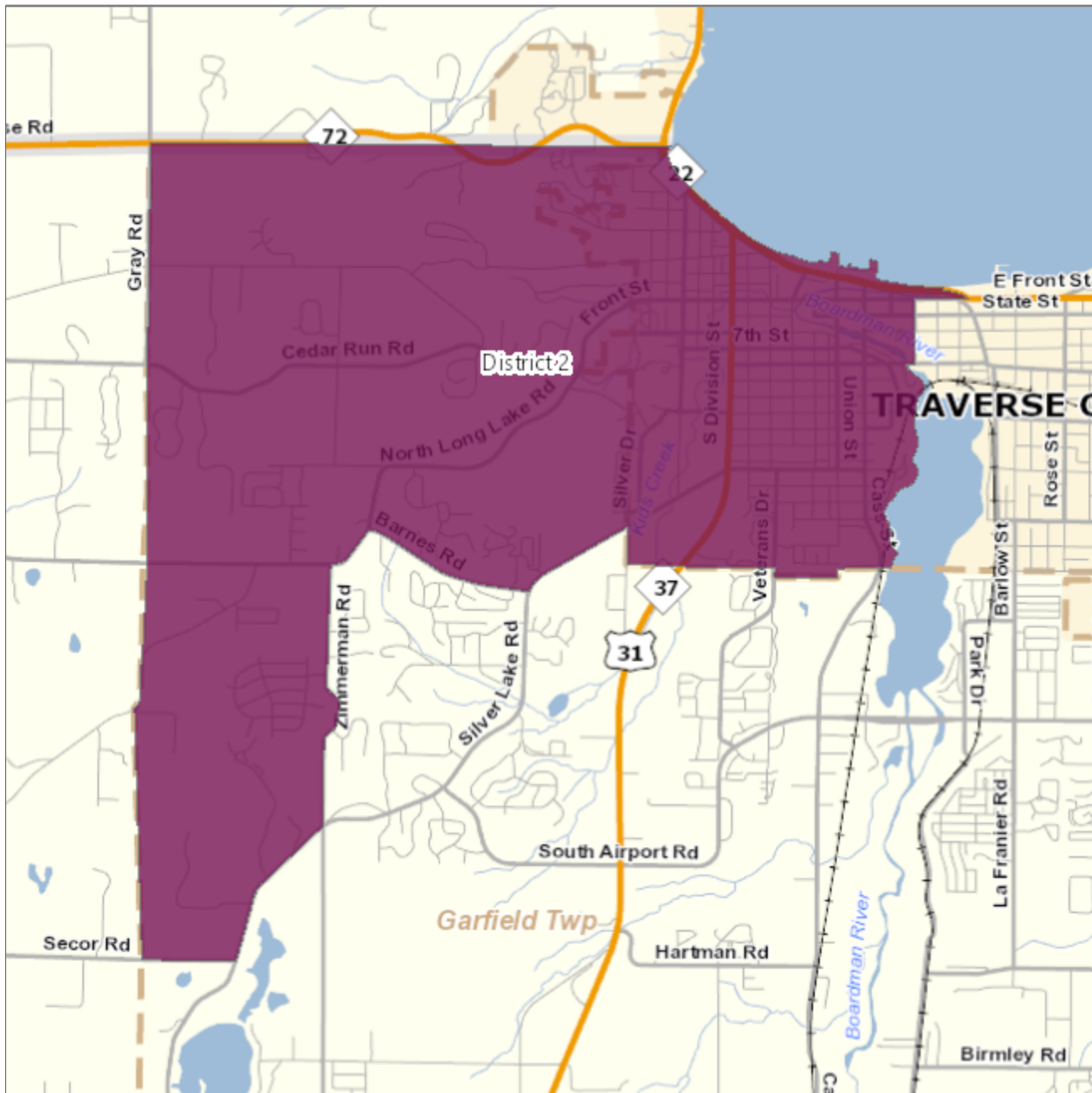
Grand Traverse County Reapportionment Plan 2021

District 1 - population 11,040



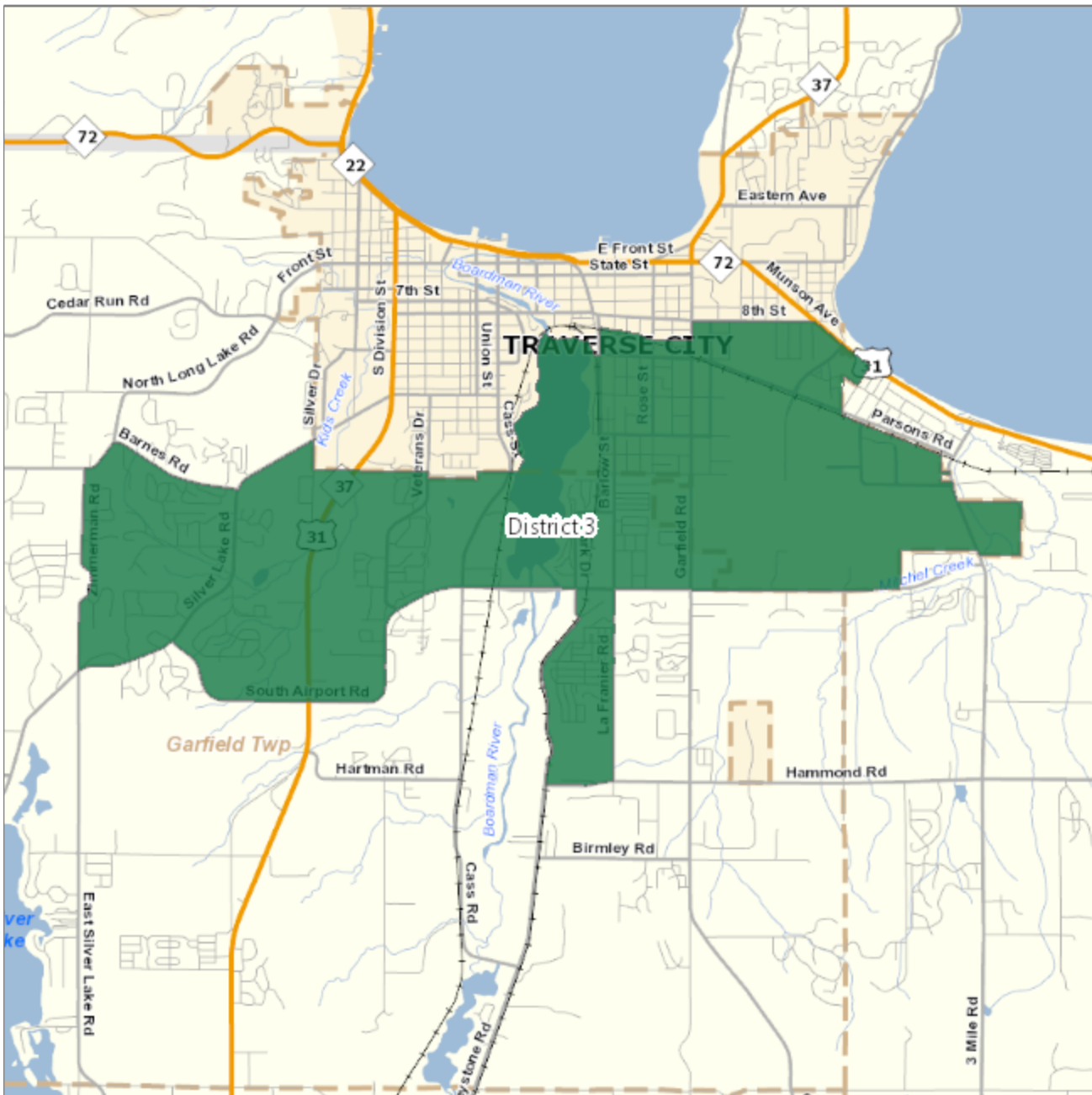
Grand Traverse County Reapportionment Plan 2021

District 2 - population 10,896



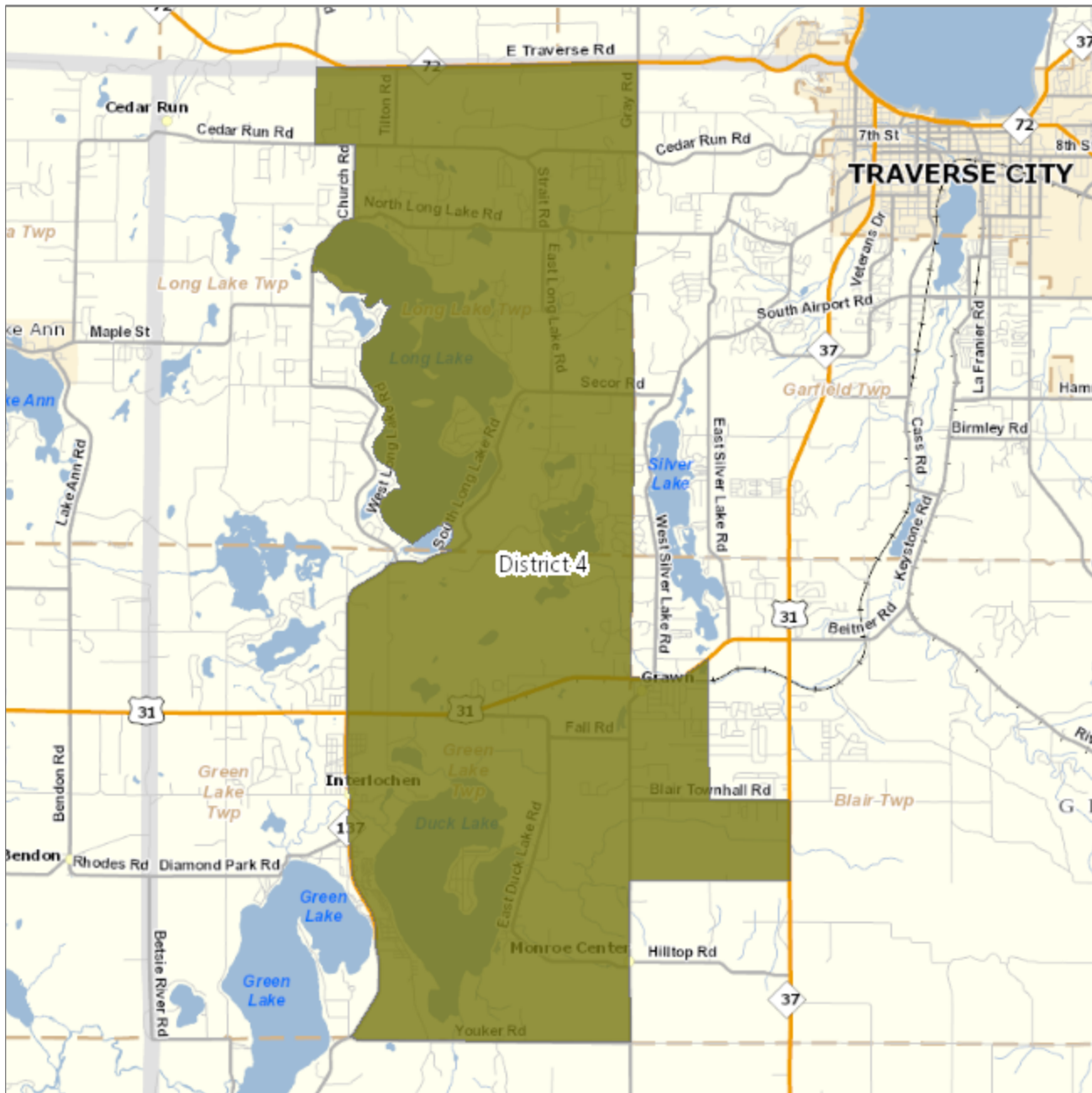
Grand Traverse County Reapportionment Plan 2021

District 3 - population 10,647



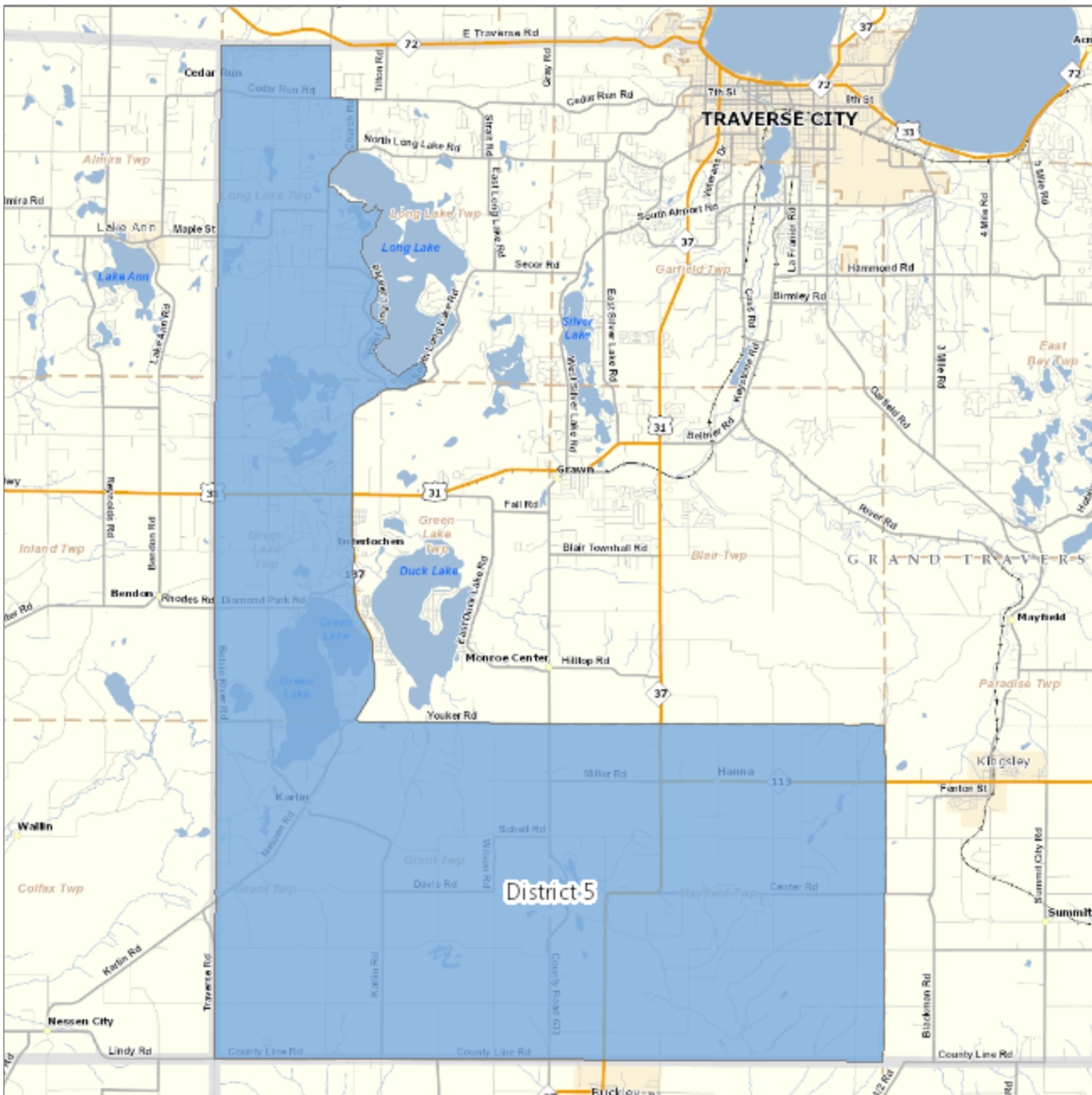
Grand Traverse County Reapportionment Plan 2021

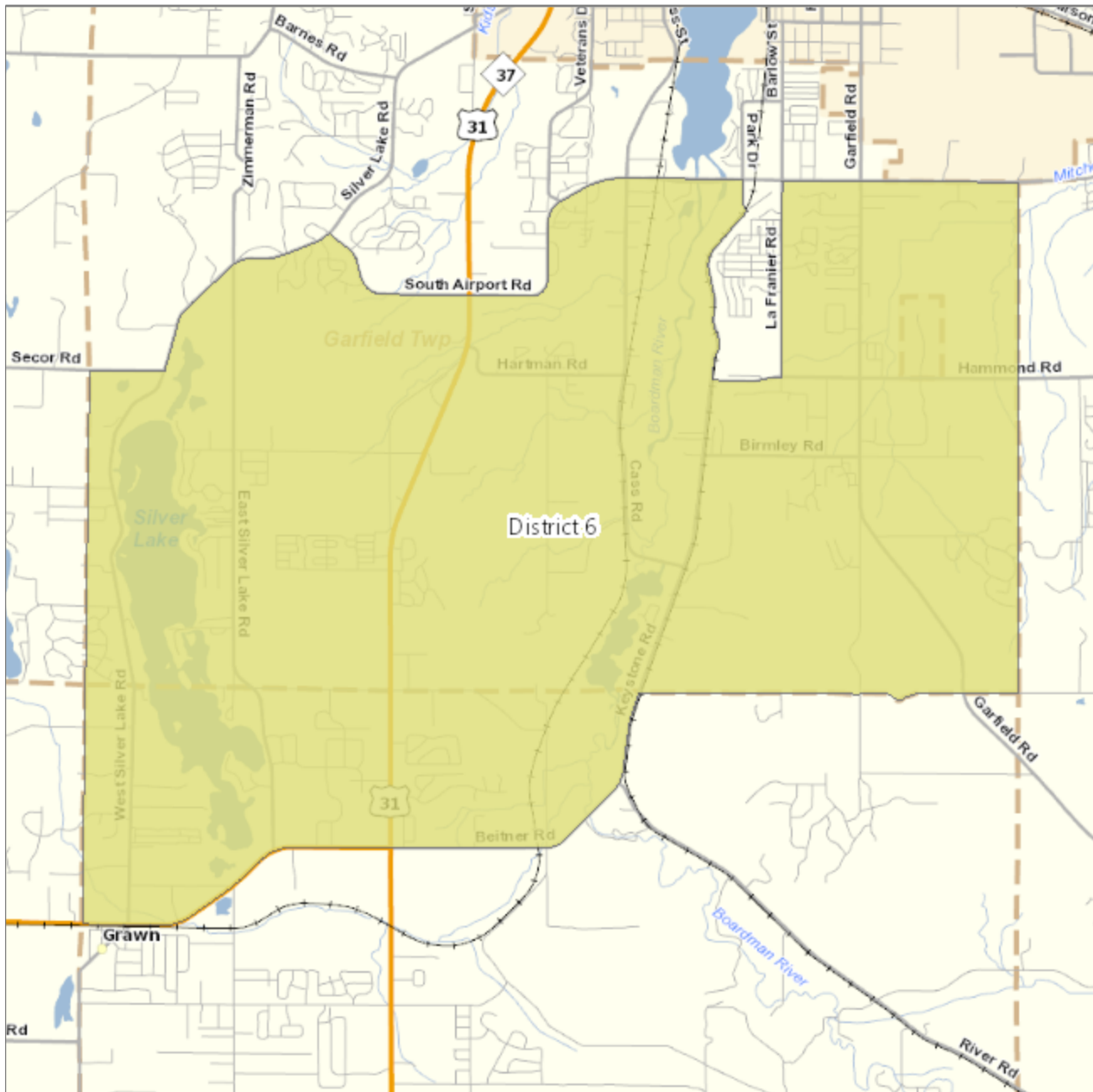
District 4 - population 10,692



Grand Traverse County Reapportionment Plan 2021

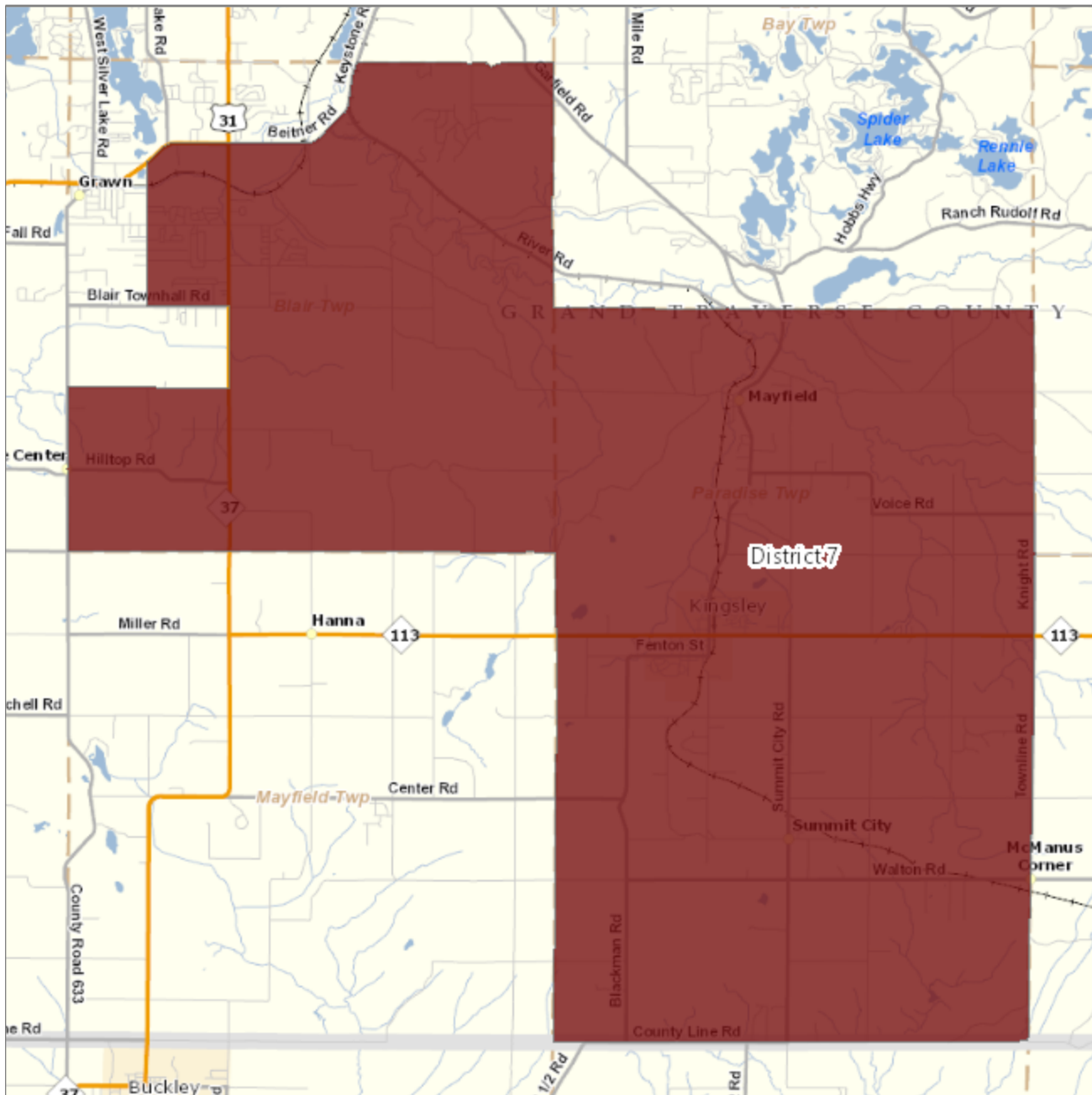
District 5 - population 10,924





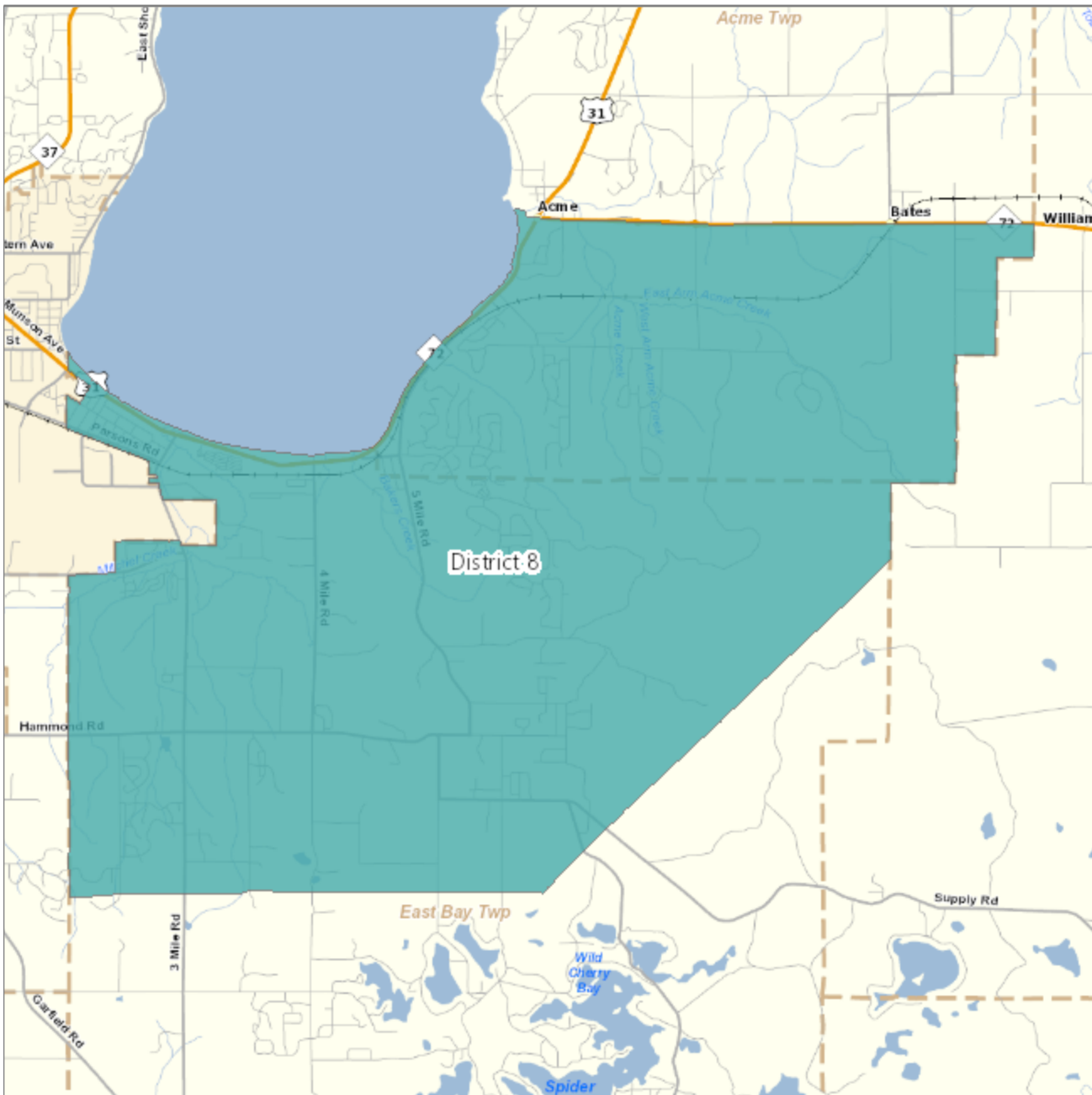
Grand Traverse County Reapportionment Plan 2021

District 7 - population 9,950



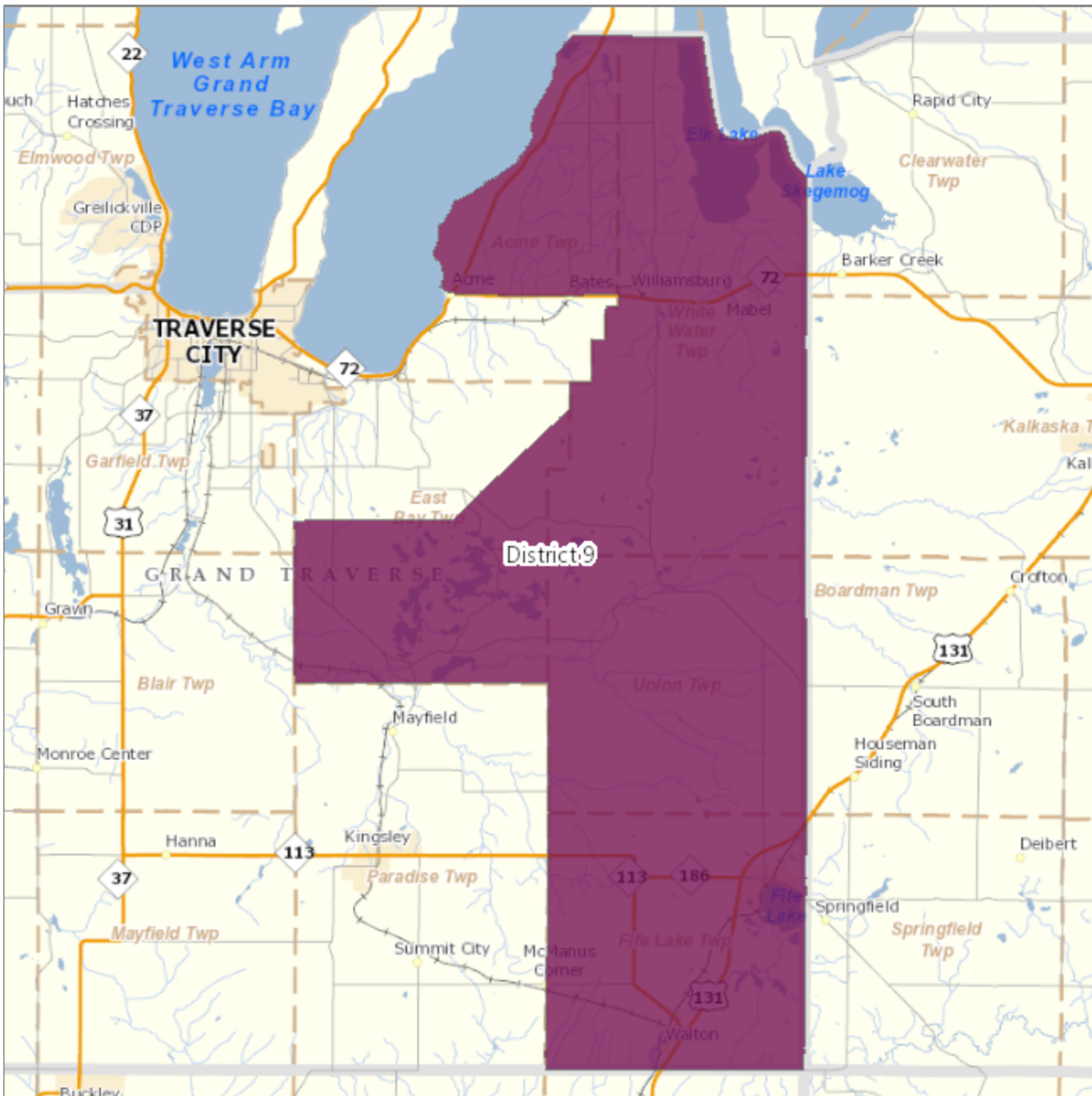
Grand Traverse County Reapportionment Plan 2021

District 8 - population 10,239



Grand Traverse County Reapportionment Plan 2021

District 9 - population 10,490



Total population all districts: 95,238